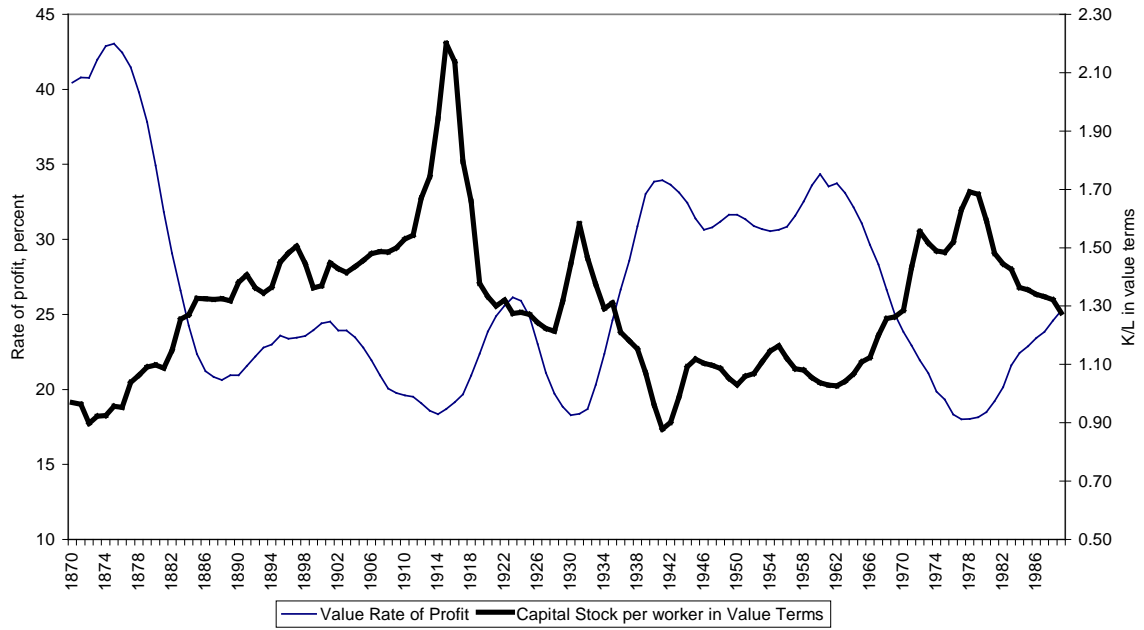
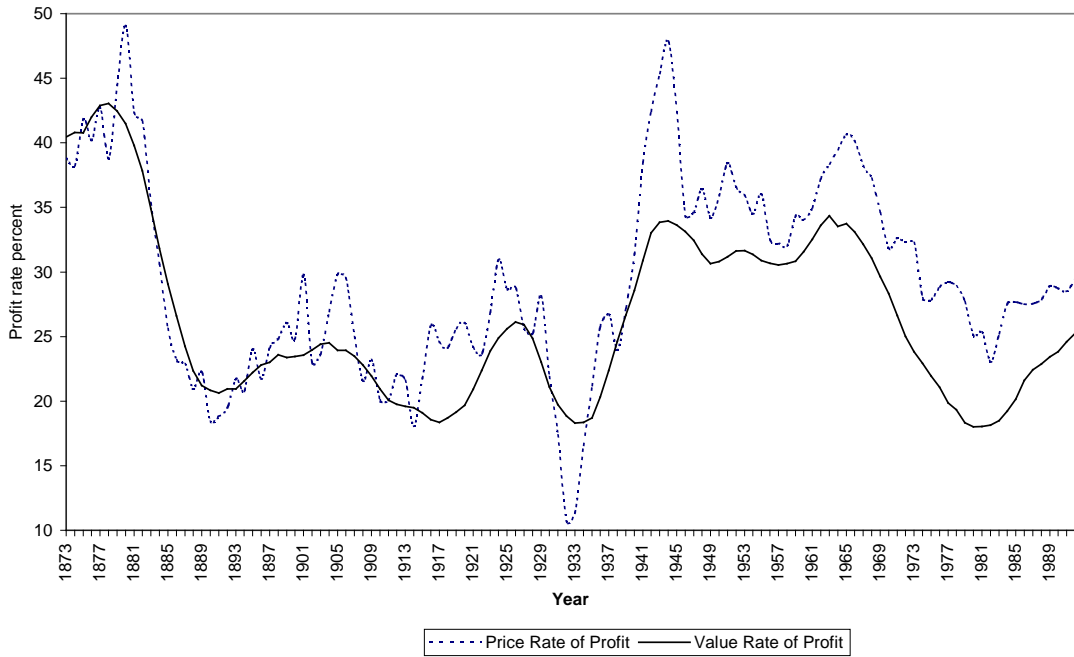


**Figure 1: United States rate of profit and capital stock in terms of labour time 1870-1992**

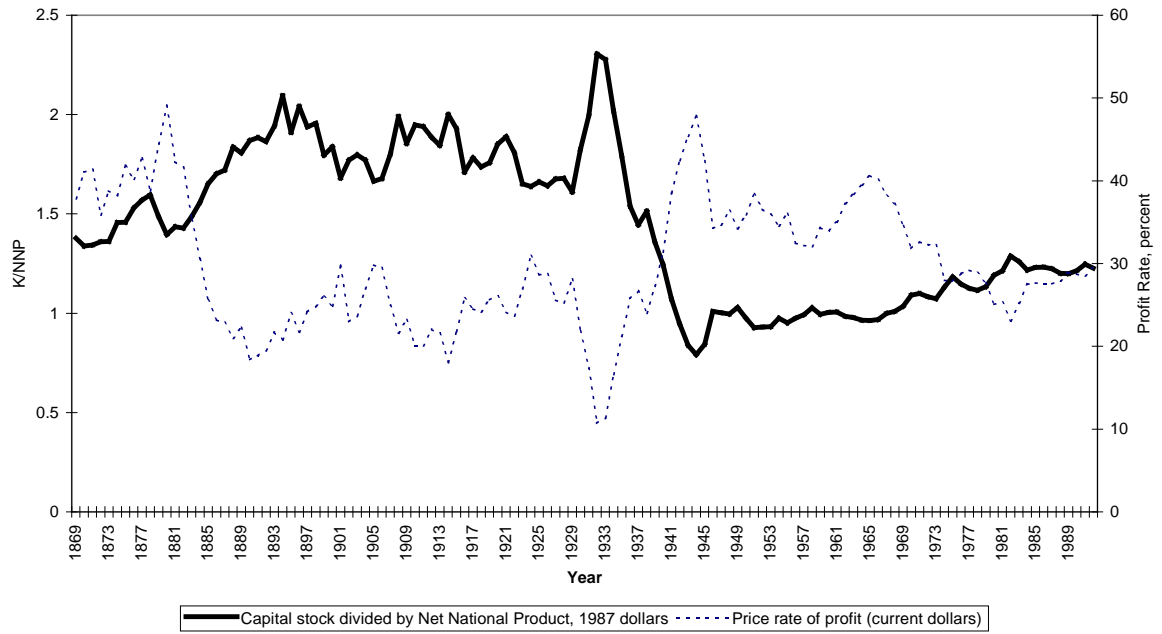


Source Data: Dumenil and Levy (1994)

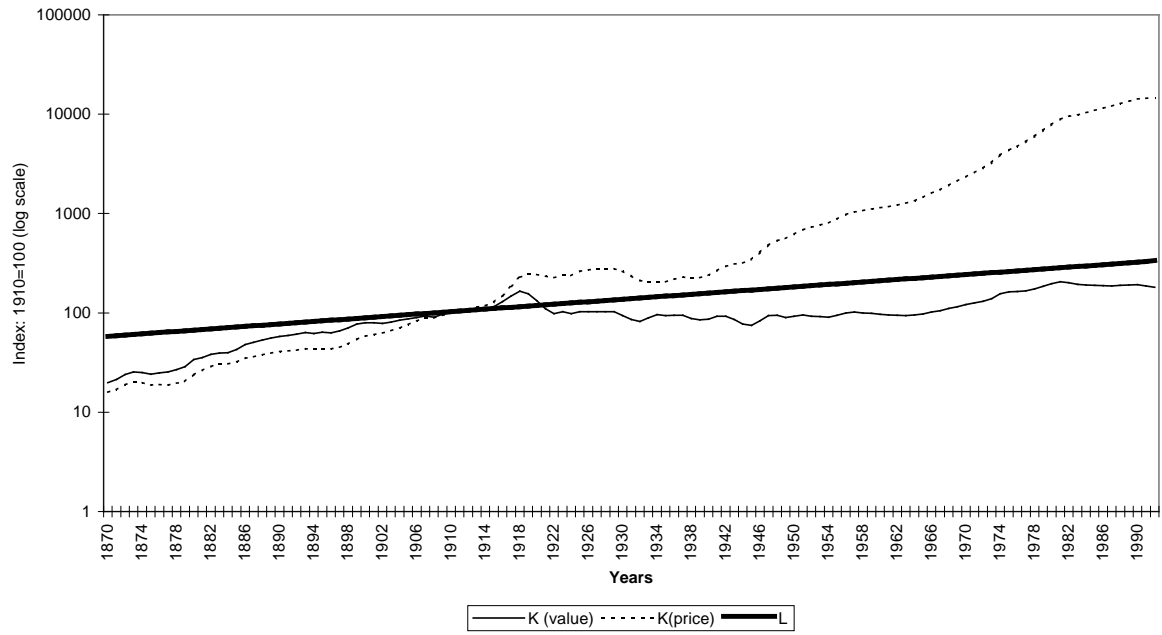
**Figure 2: Money and labour-time profit rates compared**



**Figure 4: Capital stock and profit rate in use-value terms**

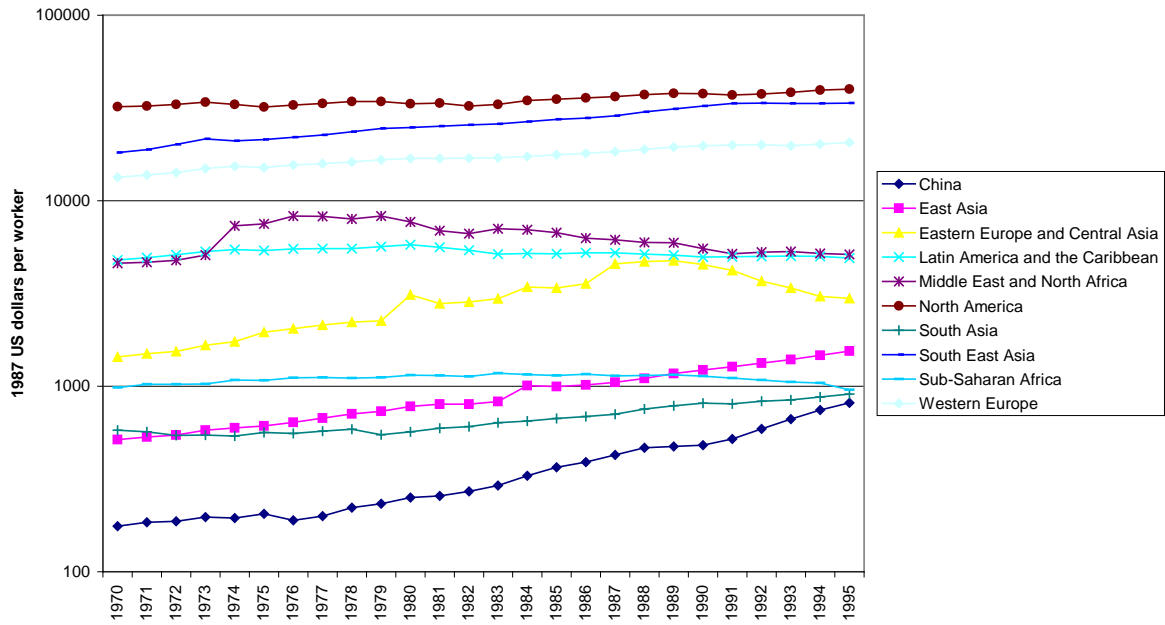


**Figure 7: growth of capital stock in terms of money and labour time**



(L is a trend line showing growth of working population)

**Figure 5: Use-Value output per worker**



**Figure 6: Unequal value for equal work**

